



SPECIFICATION SHEETS - FA06

Technology solution to eliminate the costs of unscheduled maintenance and breakdowns, improving engine up-time and reducing harmful emissions caused by diesel fuel contamination



UPDATED NOVEMBER 2020

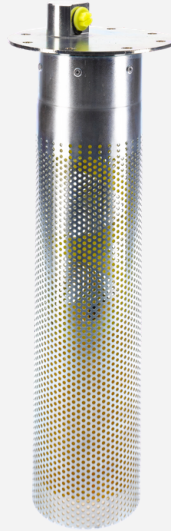
FUELACTIVE FA06

FUELACTIVE SOLUTION

By supplying the fuel lines with the highest quality fuel available, FuelActive protects the fuel system and significantly reduces problems associated with contaminated fuel.

Most contamination is water borne and is approximately 15% heavier than diesel, sinking to the bottom of the fuel tank as a result.

By drawing fuel from the upper level of fuel, the FuelActive unit avoids the settled contamination at the bottom of the tank.



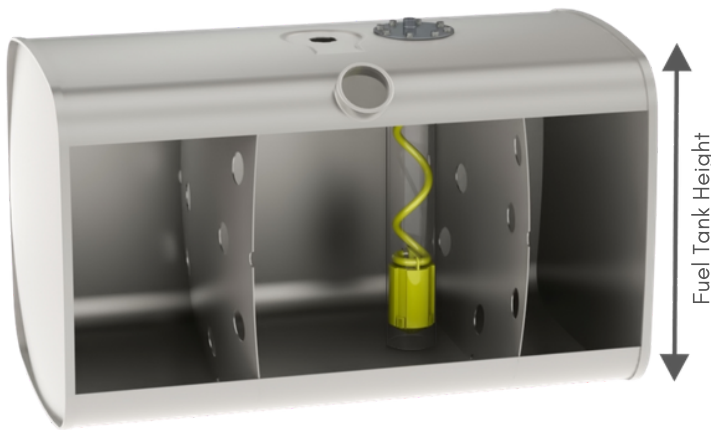
ACCREDITATION

FuelActive have achieved ISO 9001:2015 UKAS certification and maintain the highest quality management systems, consistently providing products that meet customer and regulatory requirements.

FuelActive is a technology development co-funded by Innovate UK.



TECHNICAL SPECIFICATIONS



When selecting the correct size FuelActive unit, please measure the fuel tank height and check the engine fuel flow requirements

Parameters	Description
Fuel Flow / Engine Power	240 l/hr (150 kW / 200 hp)*
Operational Temperature	-30°C to +50°C
Warranty	Period
FuelActive® Unit	5 years
Components	Material
Toplate	Stainless Steel 304
Baffle	Stainless Steel 304
Dynamic Float FA06	Plastic hydrocarbon resistant
Flexible Fuel Line FA06	Plastic hydrocarbon resistant, remains pliable when immersed in fuel.
Gasket	BS Nitrile
Gasket	Klingersil

*kW & hp are approximate and depend on the engine specification.

FuelActive FA06: >150kW (>200hp) *		
FuelActive Unit	Unit Height (mm)	Weight (kg)
FA06H200	200	1.09
FA06H225	225	1.12
FA06H250	250	1.15
FA06H275	275	1.18
FA06H300	300	1.22
FA06H325	325	1.31
FA06H350	350	1.34
FA06H375	375	1.38
FA06H400	400	1.41
FA06H425	425	1.44
FA06H450	450	1.48
FA06H475	475	1.51
FA06H500	500	1.54
FA06H550	550	1.67
FA06H600	600	1.73
FA06H650	650	1.80

FA06 FuelActive Unit			
Flow Rate / Hour		Pressure Drop (bar) Unit Height	
US Gal	Litre	300mm	800mm
8	30	0.02	0.03
16	60	0.05	0.09
24	90	0.08	0.17
32	120	0.13	0.27
40	150	0.18	0.38
47	180	0.25	0.50
55	210	0.32	0.63
63	240	0.40	0.77

1 US Gallon = 3.79 litres

All tests are conducted to the standard FuelActive testing procedure. For further details of the test arrangements, please contact the FuelActive Engineering Team

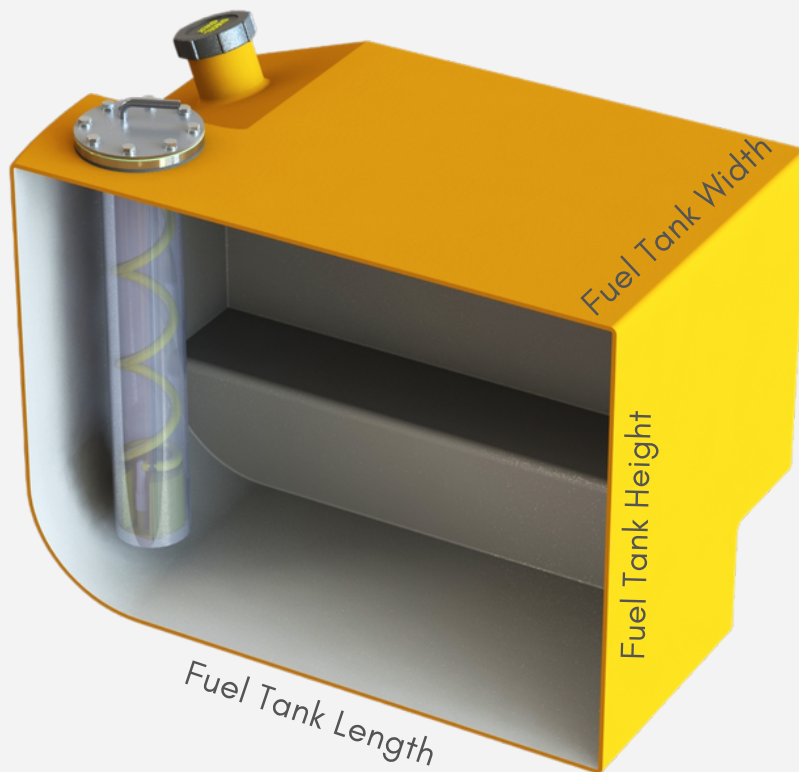
INSTALLATION SIZING GUIDE

EQUIPMENT	
Make / Model	
Engine	
Fuel Consumption (l/km)	
Engine Tier/Standard	
Tank photos/drawings available	Yes <input type="checkbox"/> No <input type="checkbox"/>
Notes: <i>Tank access issues etc</i>	

FUEL TANK	
Fitting thread & width of pick-up feed line	
Height (mm/inches)	
Depth (mm/inches)	
Width (mm/inches)	
Fuel flow (l/min)	
Engine kW/ kVA / HP	
Tank top shape	Round <input type="checkbox"/> Square <input type="checkbox"/>

CUSTOMER	
Client	
Contact Name	
Job Title	
Contact Tel No	
Email Address	
Sector	

For FA Office Use Only:	
FuelActive Unit Recommended:	
Date:	Signed:



Please take individual measurements from the actual installation in mm or inches

Specifications subject to change without notice

